

Quick Guide: NGDBComb for Sidexis XG

Each 3D Image has Raw Data to allow the program to recalculate the resolution for Third Party DICOM Exports, if needed. This tool deletes selected Sidexis XG 3D RAW DATA and reduces the size of the PDATA folder, thus reducing PDATA backup time.

It is helpful to use this tool prior to upgrading to Sidexis 4.

After using this tool you will still be able to see and work on all your images and exams.

Once data is deleted you lose the ability to do Image>Export>Third Party DICOM exports on selected images. However, you can still do Exam>Exports>Dicom & Wrap n Go viewer CD creation. If you have the Galileos Comfort or Comfort Plus, you cannot create new "Close up" tabs in Galaxis on selected images.

Reducing 3D data volumes

As 3D databases require a very large storage volume, it is wise to occasionally reduce the amount of raw 3D data.

This data reduction can be carried out via the following functions:

- Deleting raw data manually
- Deleting raw data automatically

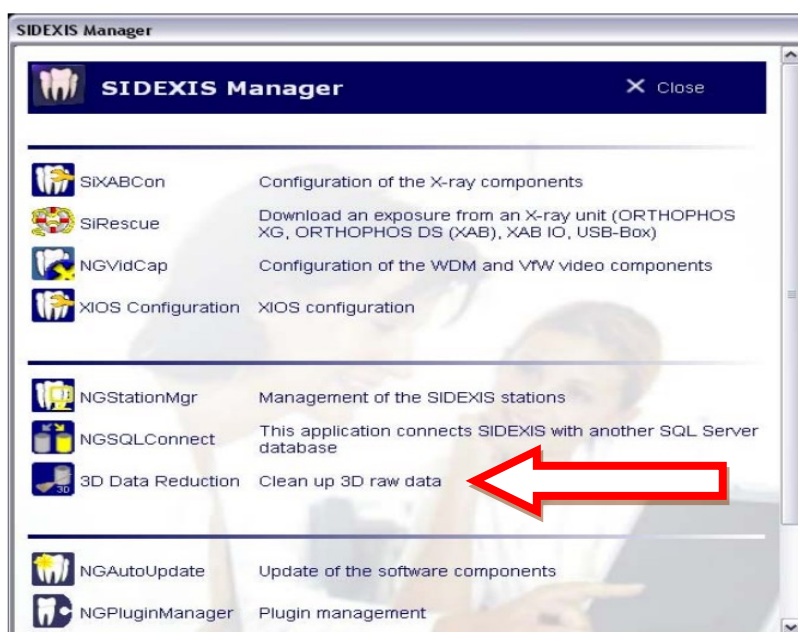
Deleting raw data manually

It is possible to delete raw data from the SIDEXIS database manually.

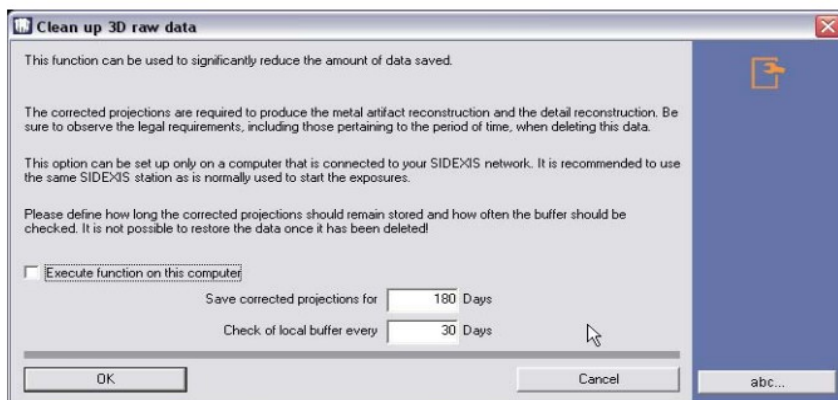
- This is especially recommended for 3D GALILEOS exposures to save space.
- This is not the case for intraoral and panoramic exposures if the IT systems used are modern high-performance systems.
For this reason it is possible to limit the *"Delete corrected raw data..."* function only to 3D GALILEOS exposures.
- You can manually remove individual patients from the deletion of raw data. This makes sense if patients are currently in treatment.

It is best to set this up on your capture PC and will process faster if everyone is out of Sidexis. It can take a few minutes up to 30 minutes, depending on the amount of data you have.

- Activate this feature in the Sidexis Manager, found in Sidexis Folder of programs.



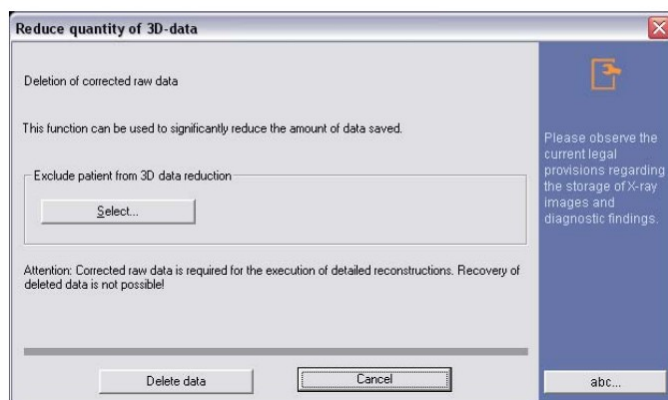
The function is activated by clicking the 3D Data Reduction button.



You can define for how long the unprocessed data should remain saved as well as the check intervals.

If you have Sidexis 2.6 or above, the tool will display the next pictured window to run the tool. In lower versions, open Sidexis and go to the heading of Utilities. There, select "Delete Raw Data". The window below appears.

The "Reduce quantity of 3D-data" dialog box opens.



Click the "Select..." button to close the "Choose patient" dialog box.

All patients, the raw data of whom should be deleted, are selected with active check boxes.

If patients are to be excluded from deletion, then deactivate the check box for the required patient.

- This makes sense if patients are currently in treatment.

NOTICE

All patients in the database are displayed regardless of the 3D data which is actually available.

➤ Press the "Delete data" button.

☞ The raw data will be deleted.

- The process can take a few minutes, up to an hour or more, depending on the amount of data to be deleted. It is suggested to set the system to delete only a few years back and then lower the number and run again, if it has never been ran before.
- When running, you will see the hour glass from time to time, with a notice at completion.
- Open Sidexis and go to Help>About to see the data size before and after reduction.