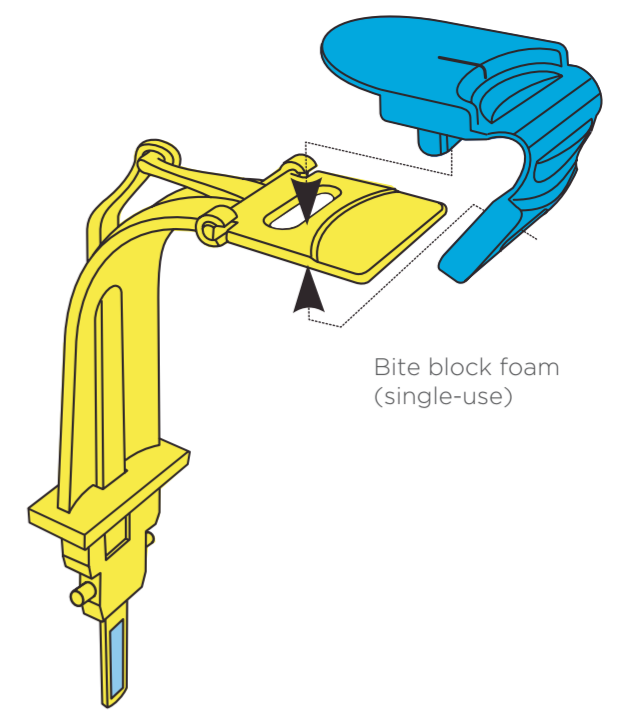


Patient positioning with occlusal bite block for the perfect panoramic image



Notes:

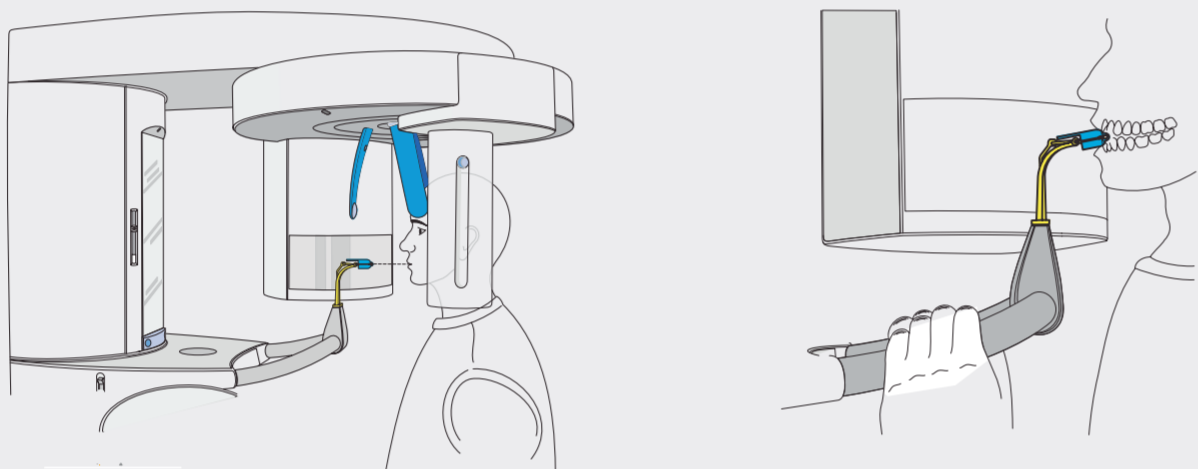
- Using the occlusal bite block means less overlap in the front and lateral teeth. The occlusal bite block is preset to the inclination of the occlusal plane, not to that of the Frankfurt horizontal plane.
- If an exposure program is selected that is not intended for use with the occlusal bite block, the message „H307 – change bite block“ appears in the comments line of the Easypad.

Preparation: Remove glasses, piercings, jewelry, and any removable dental prostheses, then put on an X-ray apron.

Hygienic protection: The appropriate hygienic protection is to be used prior to every image. This must be disposed immediately after use.

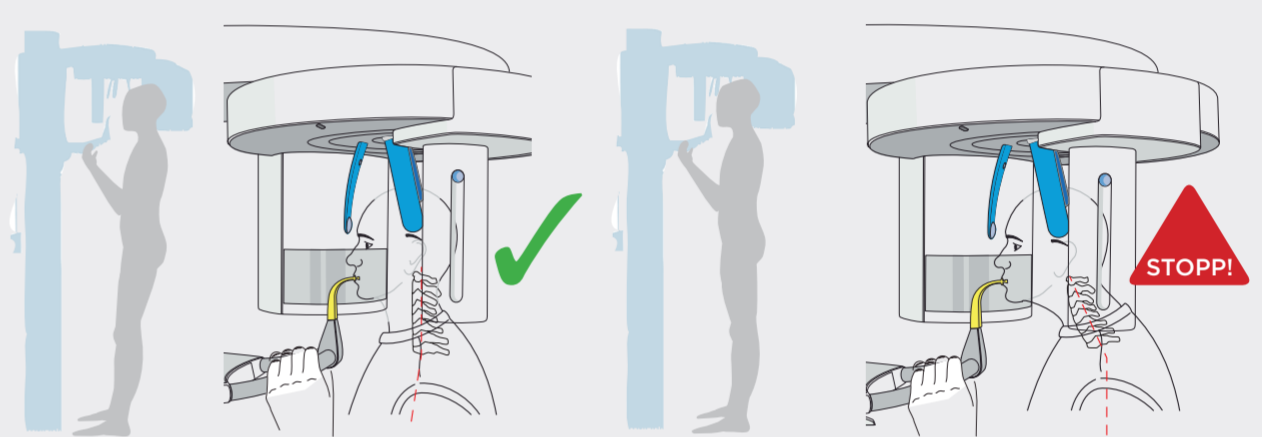
1 Front teeth of the upper and lower jaw

Position the front teeth of the upper and lower jaw in the marked notch of the bite block. The front teeth are then positioned exactly in the sharp slice. Ask the patient to hold the hand grips firmly with both hands. Then swivel the control mirror outwards.



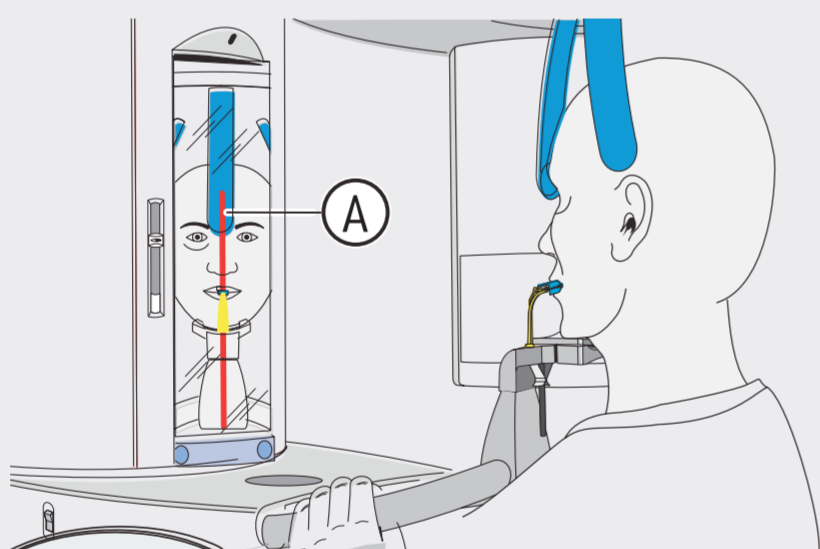
2 Correct standing position

Ask the patient to take a half step forward to extend the cervical spine. Extending the cervical vertebrae prevents lucencies on the front teeth in the X-ray image.



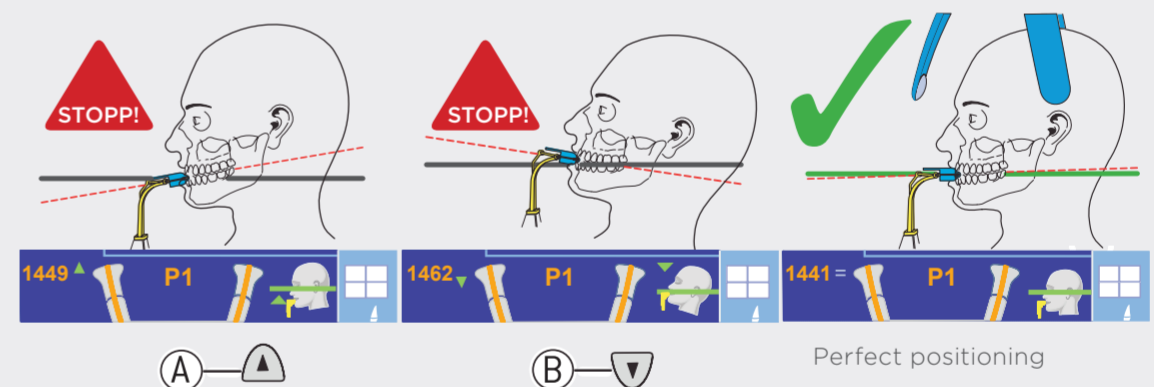
3 Checking the midsagittal plane

The light localizer is used to ensure symmetry. Align the patient (nasal root) with central light line (A) (midsagittal line).



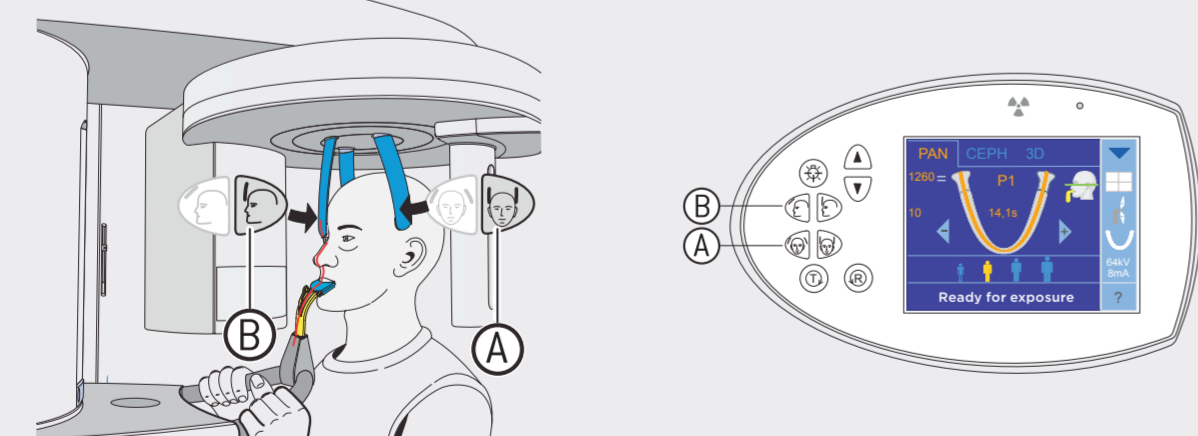
4 Checking the occlusal plane

Use the height adjustment buttons to align the inclination of the patient's head until the desired position is reached (acoustic signal and „=“ symbol on the touchscreen). Ask the patient to keep his head relaxed. **Caution!** If no change in the bite block angle is detected for 3 seconds, the speed of the height adjustment motor increases.



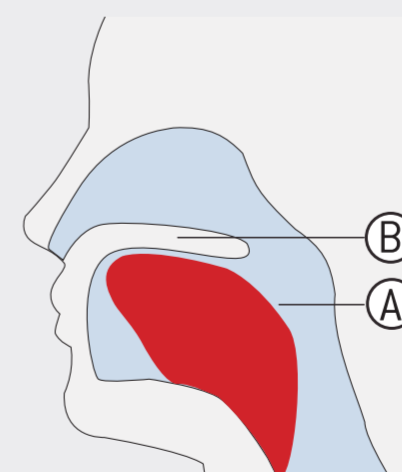
5 Head fixation

Check the midsagittal plane again. First close the temple supports (A) and then move the forehead support (B) until it just contacts the patient. Swivel the mirror back.



6 Before taking X-ray

Instruct the patient to place his tongue (A) against the roof of his mouth (B), and to hold this position until the end of the exposure.



Please read the instructions for use for a more detailed description.

Caution: Strong disinfectants can corrode the surface of the device. Therefore do not use substances containing phenol, peracetic acid, peroxide or other oxygen-splitting agents, sodium hypochlorite or iodine-splitting agents. Use only cleaning and disinfecting agents approved by Dentsply Sirona! You can find more information at dentsplysirona.com/careagents