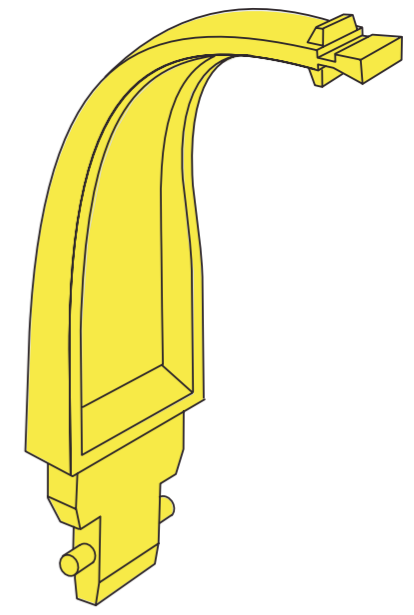


2D X-ray with Orthophos XG

Patient positioning with standard bite block for the perfect panoramic image

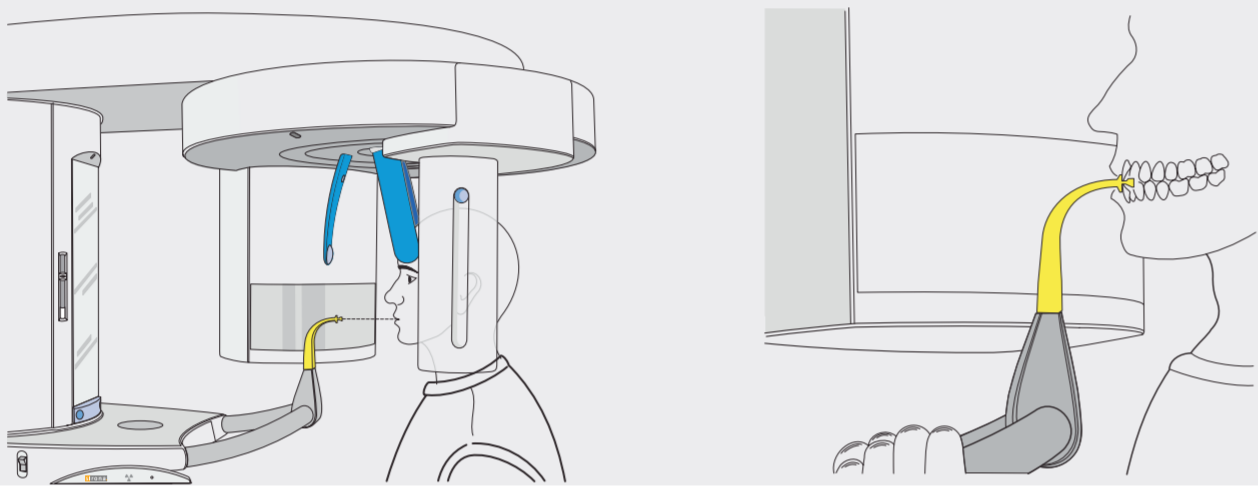


Preparation: Remove glasses, piercings, jewelry, and any removable dental prostheses, then put on an X-ray apron.

Hygienic protection: The appropriate hygienic protection is to be used prior to every image. This must be disposed of immediately after use.

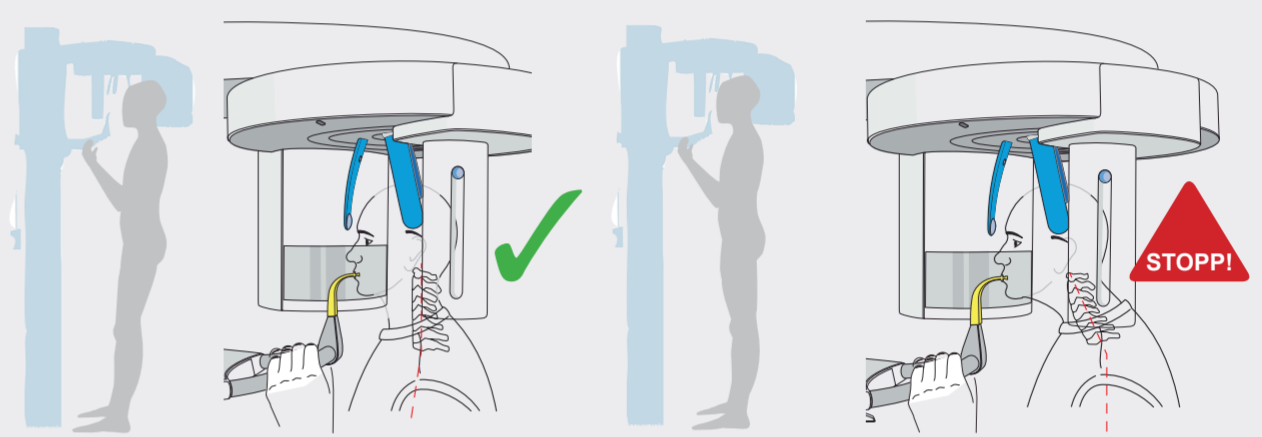
1 Front teeth of the upper and lower jaw

Position the front teeth of the upper and lower jaw in the marked notch of the bite block. The front teeth are then positioned exactly in the sharp slice. Ask the patient to hold the hand grips firmly with both hands.



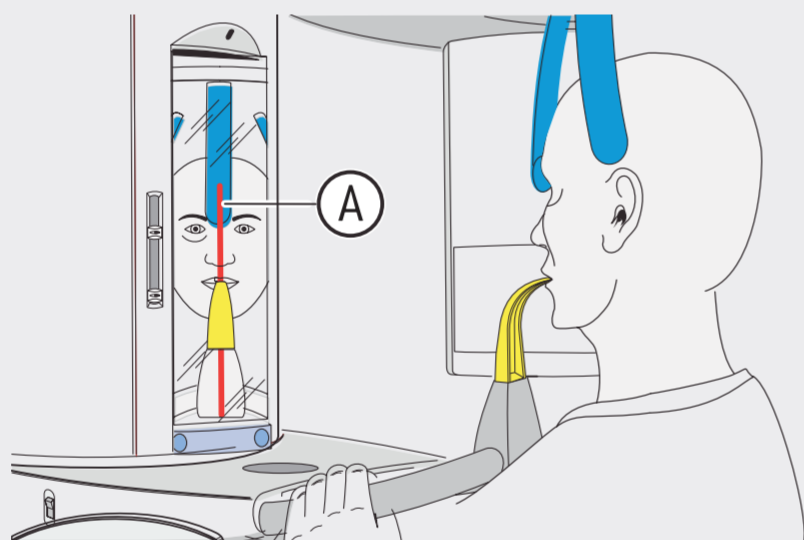
2 Correct standing position

Ask the patient to take a half step forward to extend the cervical spine. Extending the cervical vertebrae prevents lucencies on the front teeth in the X-ray image.



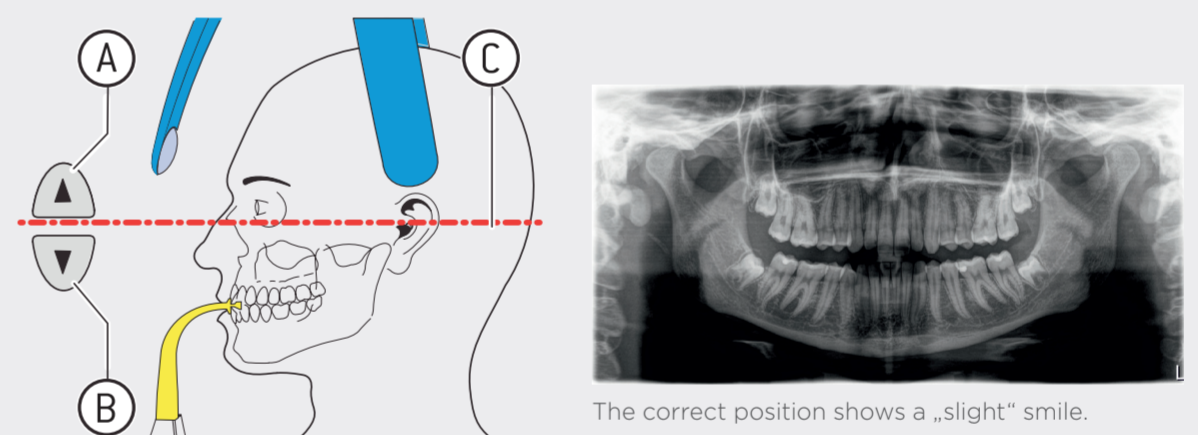
3 Checking the midsagittal plane

The light localizer is used to ensure symmetry. The midsagittal plane (A) divides the face vertically from the nose to the center of the bite block. Then swivel the control mirror outwards.



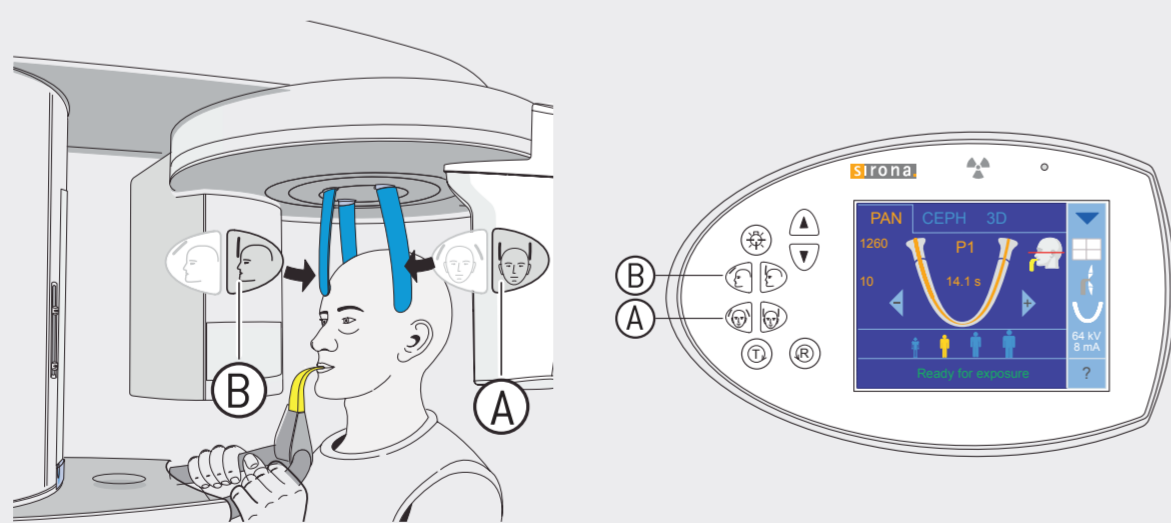
4 Checking the Frankfurt horizontal plane

The Frankfurt horizontal plane (C) runs from the left infraorbital margin to the upper margin of the external ear canal (porion). Correct the patient's head inclination as necessary. Press the height adjustment buttons briefly if necessary, up (A) or down (B).



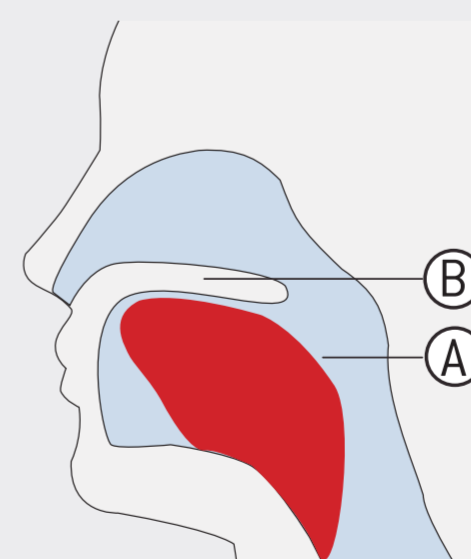
5 Head fixation

First close the temple supports (A) and then move the forehead support (B) until it just contacts the patient.



6 Before taking X-ray

Instruct the patient to place his tongue (A) against the roof of his mouth (B), and hold this position until the end of the exposure.



Please read the instructions for use for a more detailed description.

Caution: Strong disinfectants can corrode the surface of the device. Therefore do not use substances containing phenol, peracetic acid, peroxide or other oxygen-splitting agents, sodium hypochlorite or iodine-splitting agents. Use only cleaning and disinfecting agents approved by Dentsply Sirona! You can find more information at dentsplysirona.com/careagents