
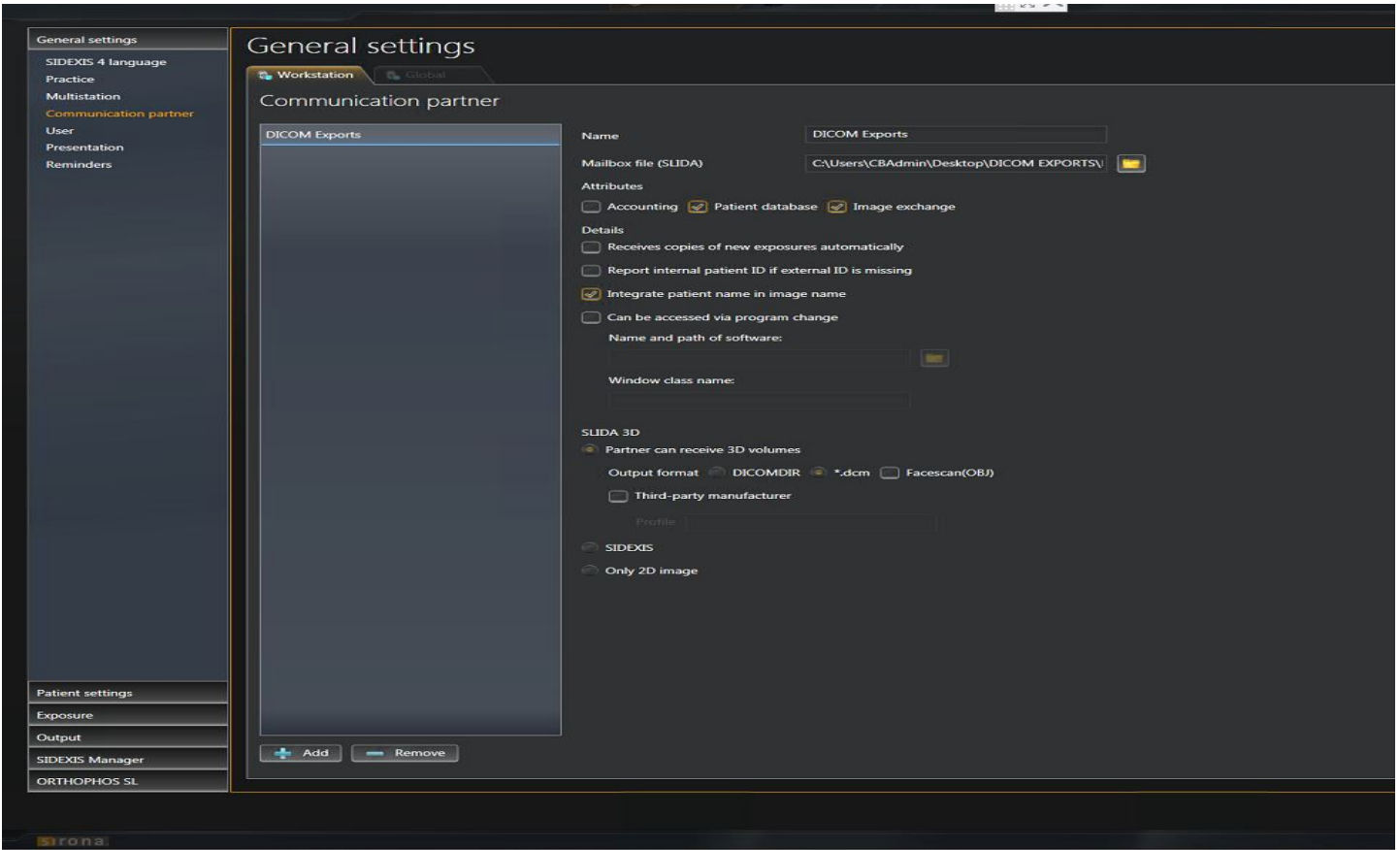


SL-XRAY Third Party (DCM) Export Guide

Sidexis 4.1.3 MUST be installed.

Sidexis 4.1.1 or 4.1.2 needs an upgrade; Call your dealer to upgrade the SL-XRAY software, as well. Upgrading unassisted and without upgrading the X-Ray software will disable the system.

A Communication Partner is configured in the General settings  of Sidexis 4.1.3 on each PC where you want to export. Add as shown. Mailbox file is where the export will go.



After Communication Partner is configured, close Sidexis and open again into a 3D Examination. The Export Icon is in tools. Click it and the export will go into the folder, you created.

